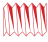



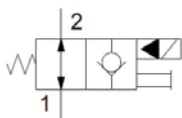
VÁLVULAS EN LÍNEA VINCKE / VINCKE IN-LINE VALVES / VALVES EN LIGNE

ELECTROVÁLVULAS 2/2 VINCKE
VINCKE SOLENOIDS 2/2
2/2 ÉLECTRO-VALVES VINCKE

2/2 NORMALMENTE ABIERTAS CUERPO ALUMINIO VINCKE
VINCKE 2/2 NORMALLY OPEN ALUMINIUM BODY
2/2 NORMALEMENT OUVERTES CORPS ALUMINIUM VINCKE




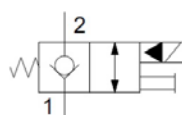
Ref.	Q (l/min.)			Volt.
VNKL570120.1	40	3/8	280	12 dc
VNKL570119	40	3/8	280	24 dc
VNKL570120	40	3/8	280	220 rac
VNKL570120.7	70	1/2	250	12 dc
VNKL570120.8	70	1/2	250	24 dc
VNKL570120.85	70	1/2	250	220 rac



2/2 NORMALMENTE CERRADAS CUERPO ALUMINIO VINCKE
VINCKE 2/2 NORMALLY CLOSED ALUMINIUM BODY
2/2 NORMALEMENT FERMES CORPS ALUMINIUM VINCKE

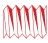



Ref.	Q (l/min.)			Volt.
VNKL570104	40	3/8	280	12 dc
VNKL570103	40	3/8	280	24 dc
VNKL570105	40	3/8	280	220 rac
VNKL570109.2	70	1/2	250	12 dc
VNKL570109	70	1/2	250	24 dc
VNKL570110	70	1/2	250	220 rac



2/2 NORMALMENTE CERRADAS DOBLE ANTIRRETORNO CUERPO ALUMINIO VINCKE
VINCKE 2/2 NORMALLY CLOSED DOUBLE CHECK VALVE ALUMINIUM BODY
2/2 NORMALEMENT FERMES DOUBLE ANTI-RETOUR CORPS ALUMINIUM VINCKE



Ref.	Q (l/min.)			Volt.
VNKL570604	15	3/8	280	12 dc
VNKL570605	15	3/8	280	24 dc
VNKL570607	15	3/8	280	220 rac

